

1T-C2-750

Dual DVI Scaler PLUS (x)

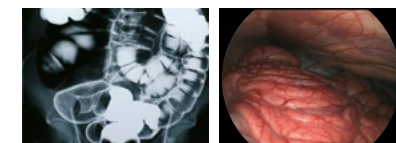


Key Features 1T-C2-750

- Dual scalers
- 2x DVI-I Inputs
- User loadable images
- DVI-D I/O support 1920x1200 60Hz
- DVI-A in/output support 2048x2048
- Analog supports RGBHV, RGBS, RGsB & YPbPr
- HDTV Resolutions to 1080p / 60
- Control via RS-232, IR or Front Panel
- Windows Control Panel
- Variable zoom to 10X & shrink to 10%
- Per-pixel or percentage scaling
- Full picture-in-picture (PIP)
- Seamless Switching
- Autoset - Auto analog picture sizing
- Chromakey and Lumakey
- Genlock, Mix and PIP
- Locking DC Power adaptor
- Optional IR Remote Control Unit
- Optional Single/Dual Rackmount Kit

The **1T-C2-750** includes two high-quality graphic scalers capable of working at full DVI video rates. It can process digital DVI-D and analog DVI-A signals including RGBHV, RGBS, RGsB and YPbPr formats, using the two DVI-I inputs and one DVI-I output available. Each of these inputs can be scaled and/or converted to any of the accommodated formats if required and HDMI signals (with or without HDCP) are also accommodated using adaptors. As well as scaling and conversion, the unit is fully equipped to provide dual picture-in-picture windowing, seamless switching, keying and overlaying, 10 editable presets and Flash memory for the storage of 10 user loadable images such as custom logos and testcards.

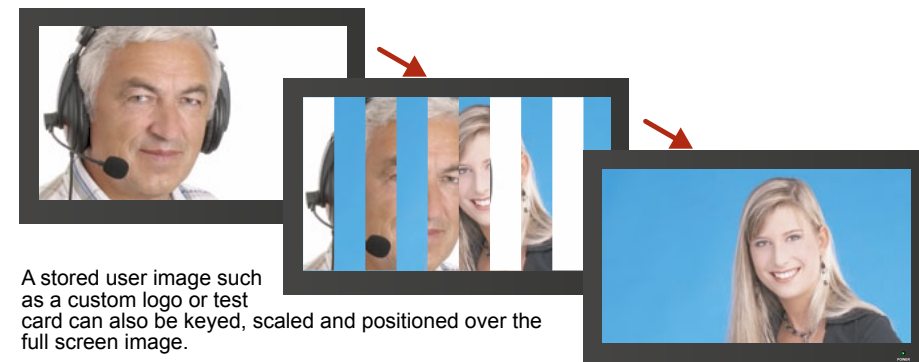
Dual Picture-in-Picture



The 1T-C2-750 can be used as a Dual Picture-in-Picture device as shown. In this example Source A and B are re-sized and positioned side by side over a color background. Source B has also been given a color border.

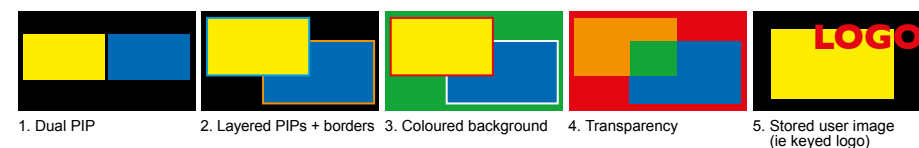
Seamless Switching

The 1T-C2-750 can be used as a Seamless Switcher between two full screen images. Transition from one input to the other is by either fade, cut or curtain wipe.



A stored user image such as a custom logo or test card can also be keyed, scaled and positioned over the full screen image.

Editable Preset examples



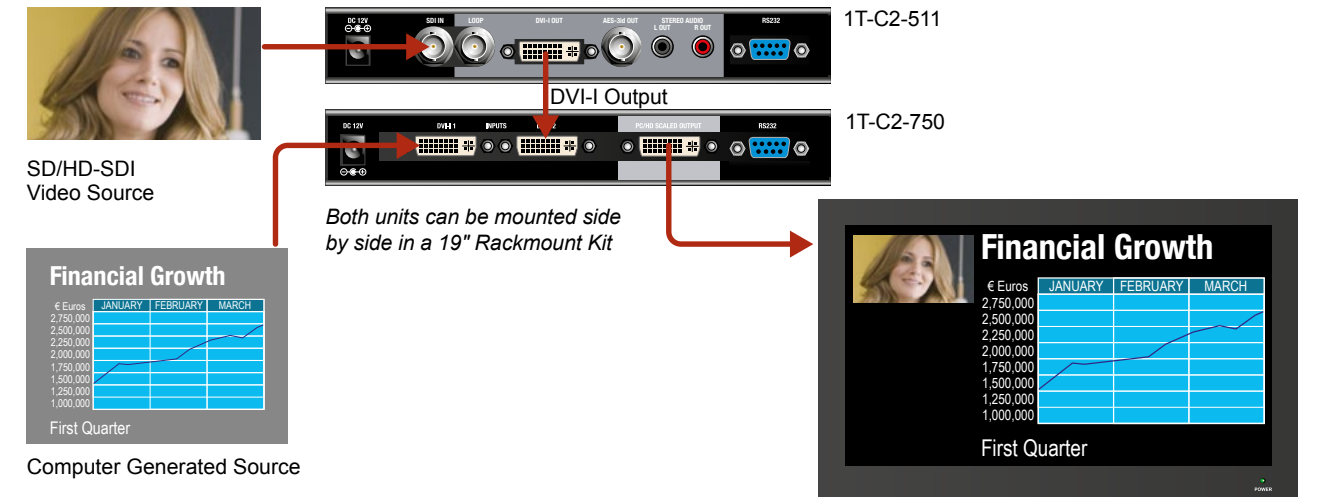
Cascading 2 or more units

Several 1T-C2-750 units can be cascaded resulting in additional picture-in-picture graphics, logos, testcards and keyed images onto one screen. For example a combination of two units can provide three scaled and positioned images from three separate sources over a color background.

Combining with other TV One products

The 1T-C2-750 can be used with many other TV One products such as digital or analog routing switchers, format converters and distribution amplifiers for advanced application solutions.

The below example illustrates the addition of the 1T-C2-511 SD/HD-SDI to DVI-I format converter allowing a live video source to be scaled, positioned and overlaid on to a computer generated image.



1T-C2-750 Specifications

Video Inputs	2x DVI-I via DVI-I Connector	Sampling Rate	162MHz
Signal Type	PC to 1920x1200,HD to 1080p/60	Digital Sampling	24-bit, 4:4:4 format
Digital DVI-D Resolutions	RGBHV, RGBS, RGsB, YPbPr	Firmware Memory	Flash, Upgradeable via RS-232
Analog DVI-A	RGBHV, RGBS, RGsB, YPbPr	Analog Video Adjustments	R-G-B Levels Contrast, Phase
Sync	TTL Level, 10KΩ, Pos or Neg	Audio support	
Termination	75Ω	Embed / De-Embed	HDMI (via DVI)
R-G-B Level Range	0.5-2.0 Vp-p	Control Methods	
Scan Rate Detection	Automatic	Local	via Front Panel Buttons & OSD
PC Resolutions	Any up to 2048x2048	RS-232 Interface	via D9 Female Connector
HDTV Resolutions	Any up to 1080p/60	Infrared Remote	via IRC-5 Remote Unit
Max Horiz Scan Rate	150KHz	Warranty	
Computer Compatibility	PC, Macintosh, Workstations	Limited Warranty	5 Years Parts and Labor
Computer Outputs		Regulatory Compliance	
Signal Type	1x DVI-I via DVI-I Connector	Main Units	FCC, CE, RoHS
Format	RGBHV, RGBS, RGsB, YPbPr	Power Supplies	UL, CUL, CE, PSE, GS, RoHS
R-G-B Level	0.7 Vp-p	Mechanical	
Analog Signals	PC to 2048x2048,HD to 1080p/60	Size (H-W-D)	30x200x90mm(1.18"x7.87"x3.54")
DVI Signals	PC to 1920x1200,HD to 1080p/60	Weight (Net)	0.52 kg (1.14 lbs)
Vertical Refresh Rate	Any to 250Hz	Environmental	
Compliance		Operating Temperature	0° to +50° C (+32° to +122° F)
HDCP	Version 1.2	Operating Humidity	10% to 85%, Non-condensing
General		Storage Temperature	-10° to +70° C (+14° to +158° F)
Size and Position	Automatic via AutoSet or Manual	Storage Humidity	10% to 85%, Non-condensing
Image Size	User-Definable Presets	Power Requirement	
Image Freeze	One Video Frame	External Power Supply	12VDC@1A
Settings Memory	Non-Volatile	Accessories Included	
Zoom Range	Variable to 10X Zoom	1x Operations Manual	1T-C2-750
Shrink Range	Variable to 10%	1x Power Adapter	US, UK, Euro or Australia
Image Mirroring	Horizontal and/or Vertical	Product Item Numbers	
Horizontal Filtering	Proprietary – CORIO@2	1T-C2-750	Dual-PIP DVI-I Switcher/Scaler
Conversion Technology	Frame add/drop	Optional Accessories	
Frame Rate Conversion	24-bit (16.8 Million Colors)	IRC-5	Infrared Remote Control
Color Resolution		RM-230	Single/Dual Rackmount Kit
		ZDH-2038	DVI Male to 5-BNC Female
		ZDH-2040	DVI Male to VGA Female

